





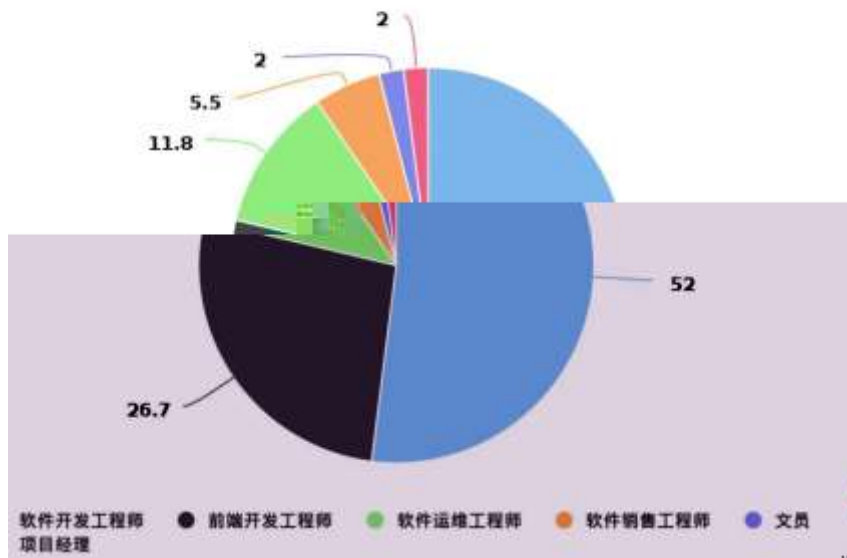




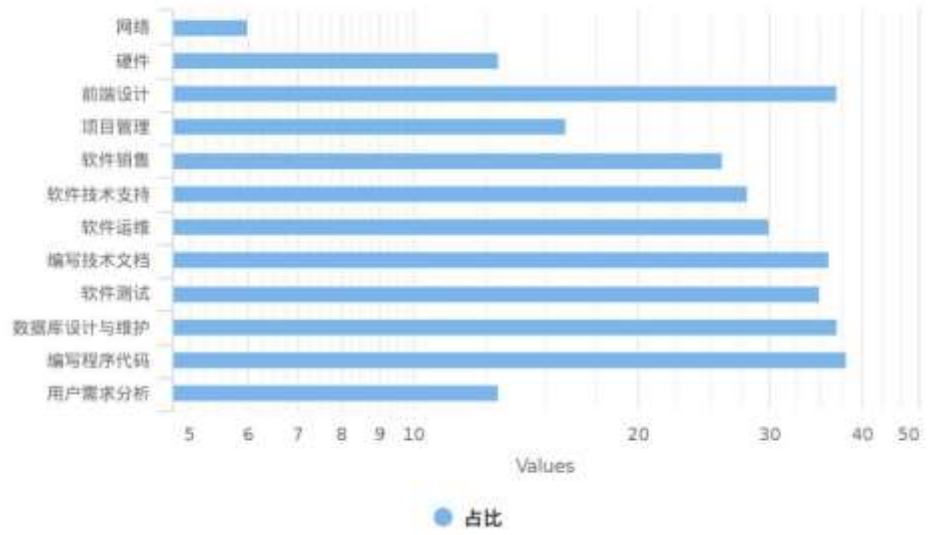




### 岗位需求调研

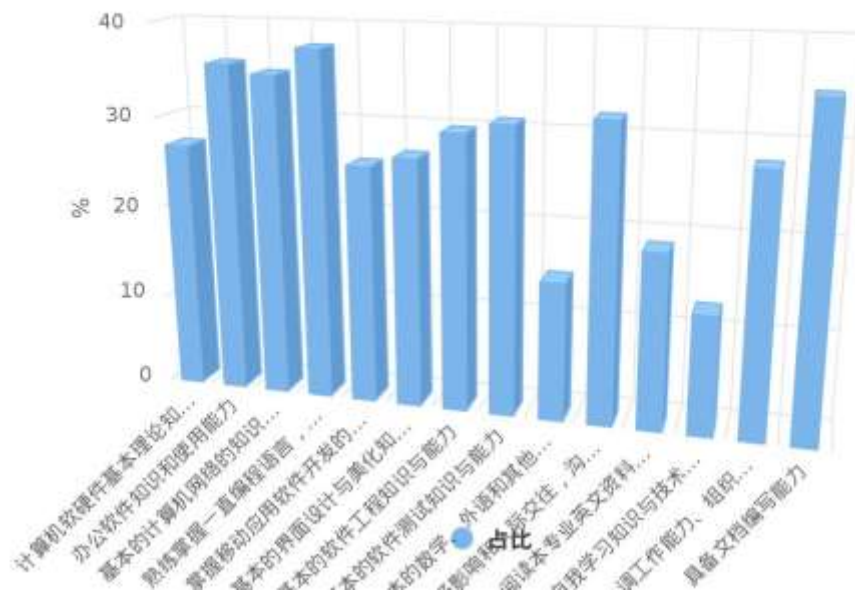


## 典型工作任务调研

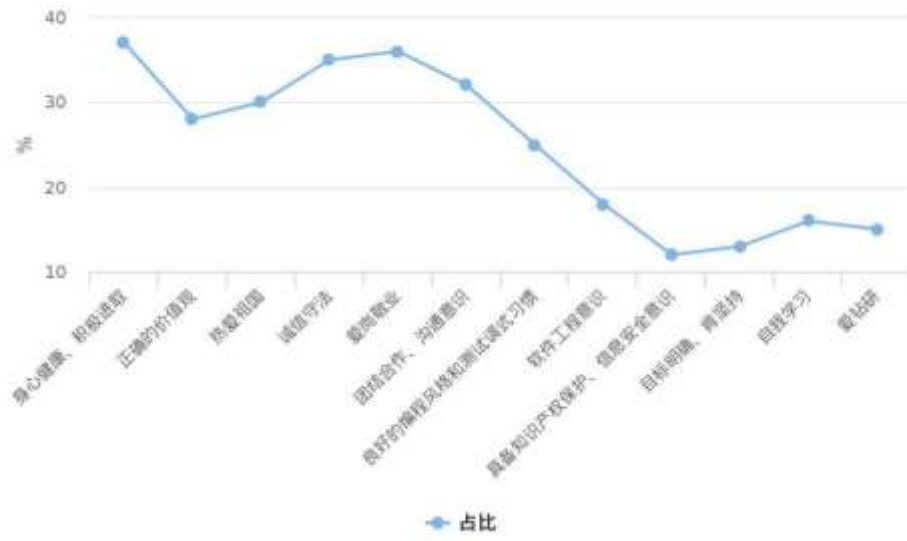


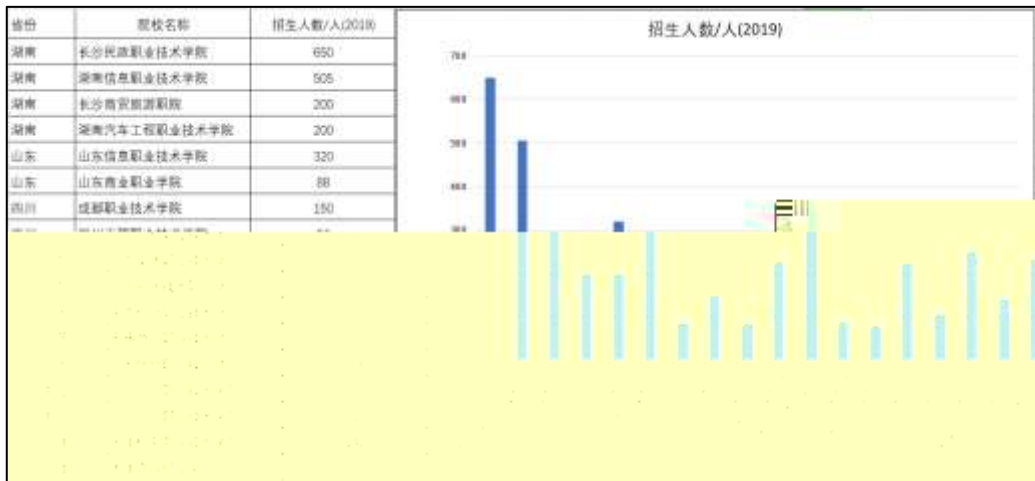


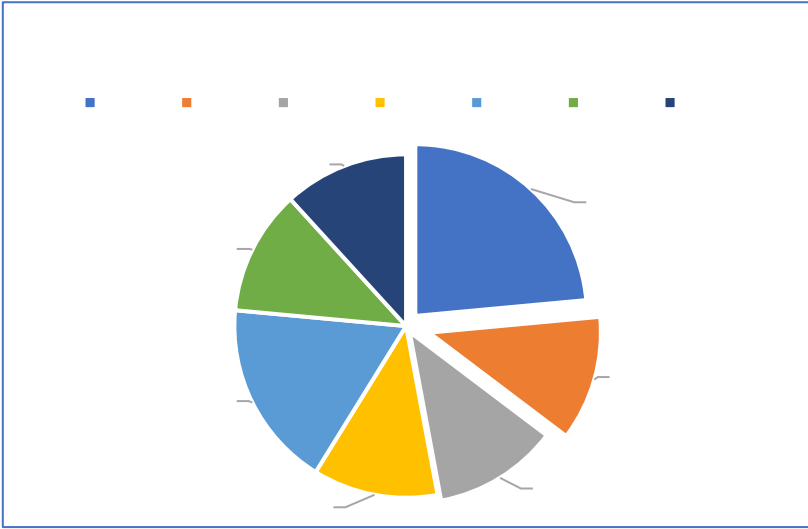
### 软件人才知识能力要求调研



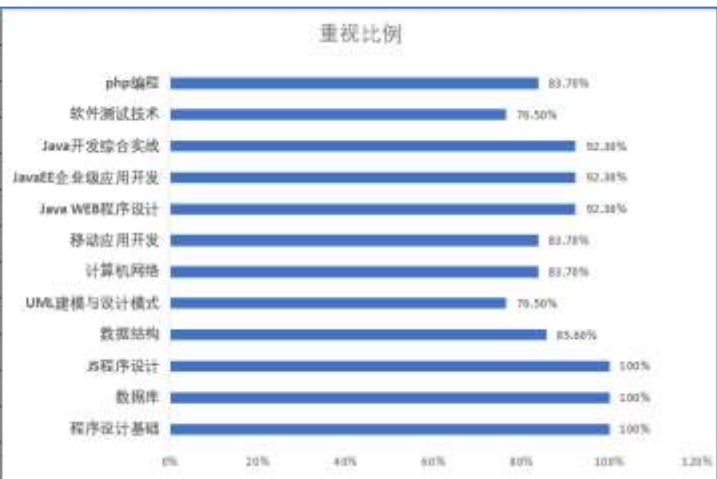
职业素质要求调研



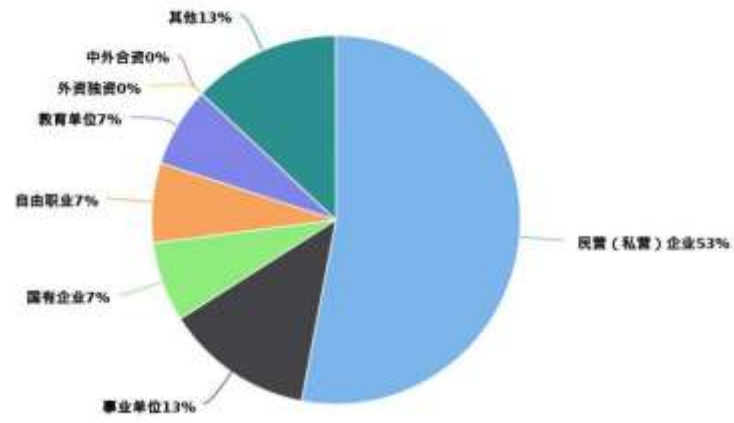




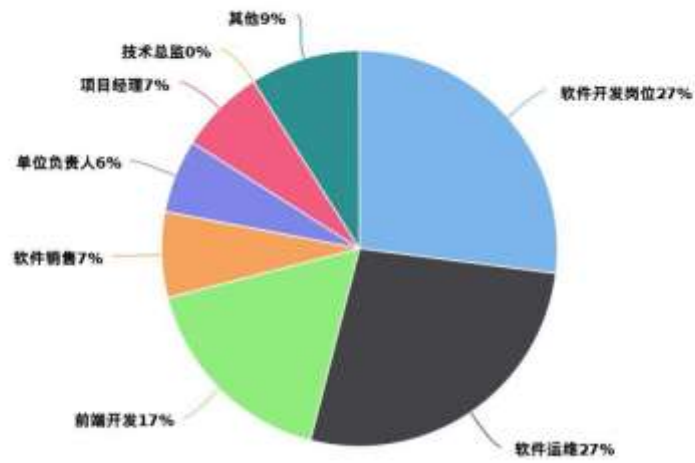
调查项目	重视比例
程序设计基础	100%
数据库	100%
JS程序设计	100%
数据结构	85.60%
UML建模与设计模	76.50%
计算机网络	83.70%
移动应用开发	83.70%
Java WEB程序设计	92.30%
JavaEE企业级应用	92.30%
Java开发综合实战	92.30%
软件测试技术	76.50%
php编程	83.70%



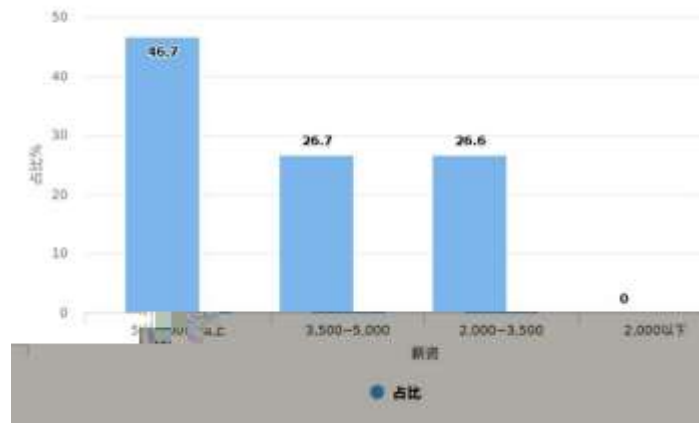
毕业生工作单位性质比例



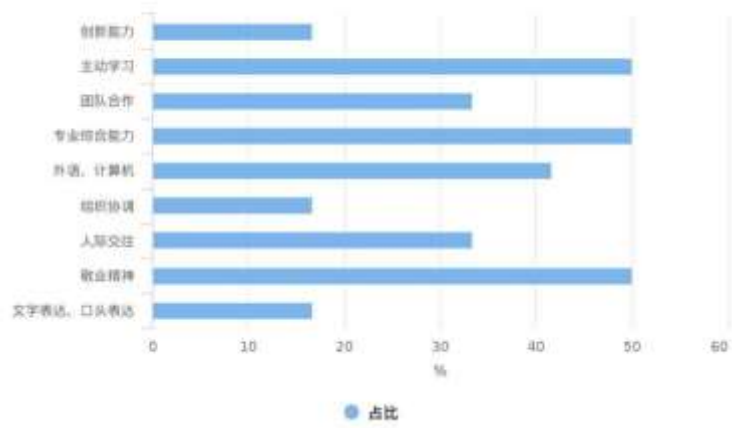
毕业生工作岗位比例



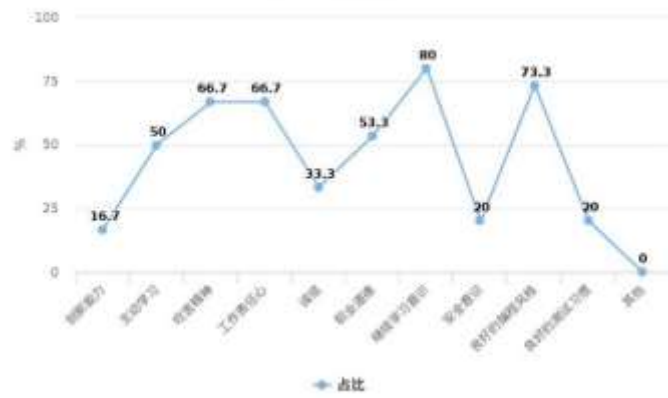
毕业生薪酬统计



在校期间能力培养统计

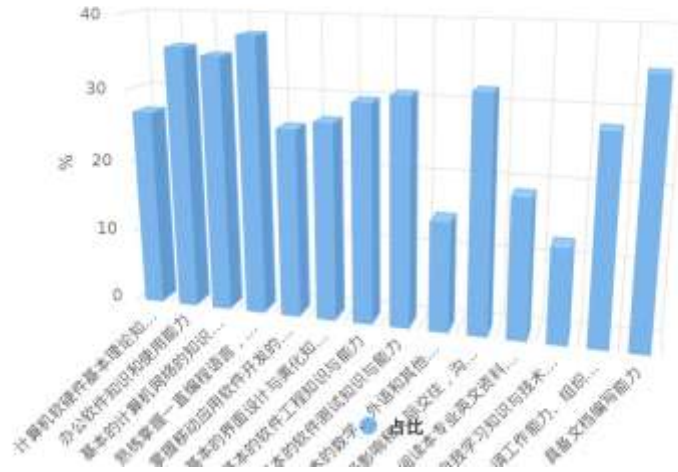


软件人员重要素质统计





### 软件人才知识能力要求调研



软件职业资格统计

